



**EWHA WOMANS UNIVERSITY  
COLLEGE OF MUSIC  
CENTENNIAL CONCERT**

**Hosted by**  
Ewha Womans University  
College of Music

**Sponsored by**  
Ewha Womans University  
Philadelphia & New York  
Alumni Association

**Ticket Reservation**  
[carnegiehall.org](http://carnegiehall.org)  
R 70\$ / S 50\$ / A 30\$

**Event Inquiry**  
[clsm7778@naver.com](mailto:clsm7778@naver.com)

EWHA

GIVING

THANKS

1925

2025

**2025.  
03.01. SAT  
5:00pm**

**First United  
Methodist Church  
of Lancaster**

29 E Walnut St, Lancaster,  
PA 17602, United States

**2025.  
03.02. SUN  
7:30pm**

**Carnegie Hall,  
Zankel Hall**

881 Seventh Avenue,  
New York, NY 10019,  
United States

## CONGRATULATORY REMARKS FROM THE PRESIDENT

I would like to begin by offering my heartfelt congratulations on the 100th anniversary of Ewha Womans University College of Music.

Founded in 1886 by Mary F. Scranton, an American Methodist Episcopal Church missionary, Ewha Womans University became Korea's first educational institution for women and now celebrates its 139-year legacy. Starting with a single student in a traditional Korean house, hanok, measuring approximately 660 square meters, Ewha laid the foundation for women's education when it was bestowed the name "Ewha Haktang" from Emperor Gojong in 1887.

Over the years, Ewha has grown from 94 students in 1895 into a world-renowned women's educational institution with 20,000 students across 15 colleges and 15 graduate schools as of 2025.

Ewha continues to nurture global women leaders while upholding the spirit of sharing and service. The theme of the College of Music's U.S. music performance, "**Giving Thanks,**" reflects Ewha's philosophy of paying forward the love and grace we have received back to the world. I extend my deepest gratitude to the College of Music and our alumnae in the United States for their dedication to this performance, and I send my best wishes for its success.

Through our enduring commitment to fostering outstanding talent, Ewha will strive to ensure that this auspicious occasion continues to resonate for years to come.

Once again, congratulations on the 100th anniversary of the College of Music.



**Hyang-Sook Lee**

President of Ewha Womans University  
March 2025

## CONGRATULATORY REMARKS FROM THE DEAN

Thank you all for joining us today to celebrate the 100th anniversary of Ewha Womans University College of Music.

Ewha Womans University is a school that has always thrived under the prayers and love of many people. Ewha's journey into music education began with the teachings of missionaries and the spread of hymns, marking Korea's first encounter with Western music. Through the efforts of the 6th President of Ewha Haktang, Alice Appenzeller, we acquired the present-day Sinchon site in 1922. Upon Ewha Haktang's relocation to its new campus in 1925, our school was elevated to become Ewha College, with the establishment of the Department of Literature and the Department of Music during this period. Today in 2025, we are proud to celebrate a century of both the College of Liberal Arts and the College of Music.

**This centennial celebration of the College of Music features meaningful performances** in honor of Alice Appenzeller, beginning with the centennial concert "Giving Thanks" at Lancaster Church in the United States, where her family was commissioned as missionaries, and culminating in a concert at New York's Carnegie Hall. These events represent a heartfelt tribute to the missionaries who devoted themselves to Ewha.

We express our sincere gratitude to all those who have shown their unwavering support and care in nurturing the College of Music throughout its remarkable 100-year journey. We warmly invite you to walk alongside Ewha's musical legacy as we carry forward the enduring tradition of education at Ewha.

Thank you.



**Eun-Ah Kwak**

Dean of the College of Music, Ewha Womans University  
March 2025



# GREETING



Welcome! It's an honor to present the Ewha Womans University, College of Music Centennial concert in this historic First Methodist Church in Lancaster, Pennsylvania. This church holds a special connection to Alice Appenzeller (1885-1950), who was born in Korea to Methodist missionary parents from this congregation. After growing up, she went to America to study at Wellesley College. She later became a missionary herself and went on to serve as the first honorary president of

## Kyo Yun Lee

1970, Department of English Education  
President of the Philadelphia Alumni Association



It is truly moving and joyful to celebrate the 100th Anniversary of the Ewha Womans University College of Music with the concert themed Giving Thanks, held at Lancaster First United Methodist Church and the world-renowned New York Carnegie Hall. Imagining the founding of the college 100 years ago fills my heart with immense pride and profound gratitude for the vision, courage, and unwavering dedication of its founders, whose efforts paved the way for generations of talented women in music.

This concert is a meaningful expression of deep gratitude, representing the enduring spirit, resilience, and remarkable achievements of the College of Music over the past century.

## Youngshin Kim

1988, Department of German Literature)  
President of the New York Alumni Association

Ewha Womans University in Korea. She set a milestone for women's education during turbulent times. Through her lifelong dedication and service, she devoted her life to educating the students of EWU. Nowadays, women's colleges' importance persists around the world. Today, Ewha Womans University stands as one of the largest women's universities in the world.

I hope this concert serves as a meaningful and memorable tribute to her legacy.

It is profoundly touching to return to where it all began, offering this precious musical gift to those who believed in and supported Ewha's early journey, even in challenging times.

It is also an incredible honor for the Ewha Univ. New York Alumnae Association to extend our helping hands in support of this extraordinary event. We are deeply grateful to contribute to such a historic and meaningful occasion. We hope the heartfelt gratitude of Ewha resonates deeply with everyone in attendance. May this event inspire new connections, new dreams, and strengthen the legacy of Ewha for generations to come.

# EWHA GIVING THANKS

## 1925

## 2025



Since 1925  
EWHA THE FIRST, EWHA THE BEST  
EWHA WOMANS UNIVERSITY  
COLLEGE OF MUSIC

# PROGRAM & NOTES

## 1. Jazz Piano Solo: **This Is My Father's World**

Piano : Euiju Cheong

Originally a poem by Maltbie Davenport Babcock, later set to a British folk tune by Franklin L. Sheppard, this beloved hymn is reimagined in a jazz piano solo, blending traditional melodies with intricate improvisation.

## 2. Piano Ensemble Ewha-Roum: **Variations on Simple Gifts by Aaron Copland, Arirang Rhapsody by Ji Soo Lee, Galop-Marche by Albert Lavignac**

Piano : Hyun Kyung Kim, Yeanha Yoo, Sooyeon Jeong, Hye Seung Shin

A four-pianist ensemble delivers an energetic performance of Variations on Simple Gifts by Aaron Copland, a modern reinterpretation of Korean folk melodies in Arirang Rhapsody by Ji Soo Lee, and the dazzling virtuosity of Lavignac's Galop-Marche.

## 3. Daegeum Solo: **Cheongseonggok**

Daegeum : Hyeohn Park

A traditional Korean piece showcasing the 'cheong', pure, clear sound, with free-flowing melodies reflecting harmony with nature. The performance captures the refined musical aesthetics of Korean scholars.

## 4. Gayageum Solo: **Gayageum Sanjo**

Gayageum : Eun-ah Kwak

Highlighting the expressive range and technical mastery of the gayageum, this traditional instrumental piece blends lyrical passages with intricate rhythms, offering a uniquely improvised and emotive performance.

## 5. Traditional Folk Song: **Jeongseon Arirang**

Folk Song : Hyo Joo Kang

A cherished folk song of the Jeongseon region, characterized by its poignant tone, long melodies, and lively rhythm. It concludes with an extended, emotionally resonant final note.

## 6. Ewha SORI: **Korean Traditional Musical Scranton, the Missionary**

Vocal : Minjee Kim, Eun Jo, Hyoseul Kim, Doeul Park, Haeun Yang, Eunsu Lee

Ensemble : Seyeon Kang, Daeun Kim, Soomin Jeon, Yuna Jeong, Nayeon Kim, Miso Kim, Myoungjin Lim

This Korean traditional musical tells the story of Mary Scranton, the founder of Ewha Haktang, who pioneered women's education in Joseon. The production highlights her legacy of hope and societal transformation through education.

## 7. Quatro Ewha: **String Quartet in F Major (4th Movement)** **by Maurice Ravel**

Violin : Hyunjung Choi, YeonJin Kim

Viola : Soomi Lee

Cello : Jee-Youn Hong

Maurice Ravel completed his String Quartet in F Major in early April 1903 at the age of 28. The work follows a four-movement classical structure. The finale reintroduces themes from the earlier movements and ends the work vigorously.

## 8. Ewha Celli: **Crossing by James Ra (World Premiere), Two Tangos by Kibbe and Piazzolla**

Cello : Il Hwan Bai, Jee-Youn Hong, Hyun-Ji Kwon, Jiwon Suh, Soo Jin Chung,

Jungmin Grace Han, Yoon Jin Park, Jiyoung Choi, Eunae Jin, Damin Kim, Noori Han, Eugene Cho

Crossing reflects gratitude for Alice Appenzeller's enduring legacy and its profound impact on modern Korean society through Ewha Celli's voice who carry forward her vision. The Two Tangos blend Kibbe's "Mellow Tango" and Piazzolla's "Libertango," merging tradition and modernity in a vibrant performance.

## 9. Soprano with Ewha Celli: **You Raise Me Up by Rolf Løvland** **Because You Are Here by Sunae Kim**

Soprano : Guibee Yang

A moving collaboration featuring the globally beloved ballad You Raise Me Up and the heartfelt Korean composition Because You Are Here, expressing hope, gratitude, and emotional connection.

## 10. Ewha Harmonia Choir: **Cantate Domino by Ken Berg, Musical Risotto by Jonathan Willcocks**

Conductor : Sooyoun Lee / Piano : Jinyoung Chang

Cantate Domino brings the joy of Psalm 96 to life with shifting time signatures and dynamic moods, while Musical Risotto uses musical terms as ingredients to create a unique and flavorful auditory experience.

## 11. Ewha Fantasy: **Ewha Fantasy by Hyunjung Ahn**

Pansori : Kyeongheon Kim

Ewha Harmonia Choir

Quatro Ewha

Ewha Traditional Ensemble

Newly arranged for the centennial, this grand composition combines vibrant choral harmonies, Pansori singing, narration and Korean traditional rhythms. The lyrics, blending the Ewha anthem with new verses, embody Ewha's legacy of tradition and modernity.



# ARTISTS



**Euiju Cheong**

Composition, Class of 2004  
Jazz Pianist



**Eun-ah Kwak**

Gayageum, Class of 1985  
Dean of the College of Music,  
Ewha Womans University



**Hyun Kyung Kim**

Piano, Class of 1994  
Director of Ewha Brillante  
Ensemble & Columnist



**Yeanha Yoo**

Piano, Class of 1994  
Faculty at Kookmin University,  
Seoul Arts High School



**Sooyeon Jeong**

Piano, Class of 1994  
Director of Mozart Piano Institute



**Hye Seung Shin**

Piano, Class of 1994  
Faculty at Ewha Womans University,  
Sogang University, Hanyang University,  
and Hansung University



**Hyeohn Park**

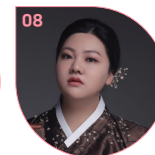
Daegeum, Class of 2009  
Faculty at Ewha Womans University



**Hyo Joo Kang**

Folk Song, Class of 2001  
Professor at Ewha Womans University

## Ewha SORI



**01 Minjee Kim** | Minyo, Class of 2025

**02 Eun Jo** | Pansori, Senior

**03 Hyoseul Kim** | Minyo, Senior

**04 Doeul Park** | Pansori, Senior

**05 Haeun Yang** | Gayageum Byeongchang, Senior

**06 Eunsu Lee** | Pansori, Senior

**07 Seyeon Kang** | Percussion, Class of 2024

**08 Daeun Kim** | Ajaeng, Senior

**09 Soomin Jeon** | Haegeum, Class of 2025

**10 Yuna Jeong** | Geomungo, Senior

**11 Nayeon Kim** | Piri, Junior

**12 Miso Kim** | Gayageum, Junior

**13 Myoungjin Lim** | Daegeum, Junior

## Quatro Ewha



**Hyunjung Choi**

Violin, Class of 2000  
Member of Quatro Ewha,  
Artistic Director of The New Baroque Company

**YeonJin Kim**

Violin, Class of 2000  
Member of Quatro Ewha, Concertmaster of TGY Orchestra

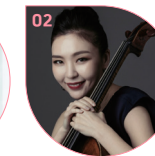
**Soomi Lee**

Viola, Class of 2000  
Member of Quatro Ewha, Member of Lafuse Players Group

**Jee-Youn Hong**

Cello, Class of 2002  
Member of Quatro Ewha, Faculty at Ewha Womans University

## Ewha Celli



**01 Il Hwan Bai** | Cello

Professor at Ewha Womans University,  
Director of Music Research Institute of Ewha

**02 Jee-Youn Hong** | Cello, Class of 2002

Member of Quatro Ewha, Faculty at Ewha Womans University

**03 Hyun-Ji Kwon** | Cello, Class of 2005

Boston Lyric Opera cellist, Phillips Exeter Academy Faculty

**04 Jiwon Suh** | Cello, Class of 2007

Classically Connected Artist

**05 Soo Jin Chung** | Cello, Class of 2009

Faculty at Ewha Womans University,  
Member of Sejong Soloists

**06 Jungmin Grace Han** | Cello, Class of 2009

Faculty at Ewha Womans University,  
Music Research Institute Researcher at Yonsei University

**07 Yoon Jin Park** | Cello, Class of 2010

Freelance Cellist in New York

**08 Jiyoung Choi** | Cello, Class of 2014

Instructor of Sunhwa, Kaywon Arts School,  
Incheon High School of Arts

**09 Eunae Jin** | Cello, Class of 2015

Mannes School of Music PDPL'26

**10 Damin Kim** | Cello, Class of 2020

Festa Philharmonic, Pyeongtaek Philharmonic

**11 Noori Han** | Cello, Class of 2021

Indiana University Jacobs School of Music D.M.'28

**12 Eujene Cho** | Cello, Class of 2022

The Juilliard School M.M.'25

**13 James Ra** | Composer, Son-in-Law of the Ewha Alumna

Curtis Institute of Music (Diploma),  
Manhattan School of Music (MM & DMA),  
Currently managed by Loam Artists

E W H A  
G I V I N G  
T H A N K S

# ARTISTS



## Guibee Yang

Soprano  
Professor at Ewha Womans University



## Hyunjung Ahn

Composer  
Professor at Ewha Womans University



## Kyeongheon Kim

Pansori, Class of 2017  
Ewha Womans University D.M.A Candidate



## Ewha Harmonia Choir

### Soprano

Myungsook Kim (1980) / Bookkee Hwang (1983)  
Sookyoung Woo (1987) / Soyeon Lee (1987)  
Jin Choi (1987) / Heajeong Rhee (1991)  
Youngah Cho (1991) / Eunkyung Kim (2006)

### Mezzo Soprano

Nansik Shin (1973) / Yunmee Kim (1986)  
Gokmi Kim (1987) / Hyeyoung Kim (1987)  
Sunhee Yang (1987) / Taeok Jang (1987)  
Hyesung Cho (1987) / Eunyoung Choi (1987)  
Yeonhee Kwak (1989)

### Alto

Chunsun Yoo (1979) / Yukyung Lee (1980)  
Kyunghee Choi (1980) / Shinsook Park (1987)  
Seungmin Oh (1987) / Hyejun Chun (1987)  
Jooyeon Lee (1991) / Hyunsook Moon (1992)  
Kyoungah Lee (1992) / Kyung Suk Choi (1992)



## Sooyoun Lee

Choral Conducting, Vocal Music,  
Class of 1988  
Conductor of Ewha Harmonia



## Jinyoung Chang

Piano, Class of 2006  
Faculty at Ewha Womans University

# 1925

# 2025

# HISTORY

## College of Music at Ewha Womans University

- 1925 Founding of Ewha College and the establishment of Korea's first music department
- 1927 Offering Korean music education in a university curriculum for the first time in Korea
- 1932 Publication of Korea's first women's composition book, *Collection of Songs by Women (Yeoryu Gagokjip)*
- 1934 Hosting the 1<sup>st</sup> All-Korea Female Secondary School Music Competition
- 1935 Relocation to the Sinchon Campus and the designation of music-exclusive facilities for the first time in Korean universities (Case Hall and Emerson Chapel)
- 1936 Establishment of the first composition major in Korea
- 1940 Appointment of Mary Kim as the 3<sup>rd</sup> Head of the Music Department (the first Korean head of the department)
- 1941 Korea's first women's string ensemble performance (November, Bumin Hall)
- 1945 Establishment of the Department of Music within Ewha Womans University's Yerimwon
- 1946 Elevated to Korea's first private comprehensive university
- 1947 Transition from the Department of Music to the College of Music;  
Kim Young-Eui appointed as the first Dean of the College of Music
- 1950 Faculty Kim Ja-Kyung became the first Korean to hold a solo recital at Carnegie Hall
- 1951 Reorganization of the College of Music into the School of Music within the College of Arts;  
establishment of the first independent classroom building in Busan during the Korean War
- 1954 Holding the 1<sup>st</sup> National High School Girls' Music Competition
- 1956 Completion of the Grand Auditorium (Korea's largest auditorium at the time)
- 1956 Korea's first university opera production (*Hänsel und Gretel* by Humperdinck)
- 1960 Founding performance of Korea's first women's orchestra
- 1967 Establishment of the Church Music Department; division of the Instrumental Music Department into the Piano Department and the Orchestral Instruments Department
- 1974 Establishment of the Department of Korean Traditional Music (renamed the Department of Korean Music in 1999)
- 1975 Founding performance of Korea's first university chamber ensemble
- 1981 Completion of the new music building; opening of the College of Music Library,  
which held the largest collection of music resources at the time
- 1986 Celebratory performances for the centennial anniversary of Ewha Womans University
- 1990 Founding of the Ewha Opera Company
- 1991 Opening of Korea's first Computer Music Lab
- 1991 Dedication of the pipe organ in Kim Young-Eui Hall
- 1997 Establishment of the Music Research Institute and publication of the academic journal,  
*Journal of Ewha Music Research Institute (Ewha Umak Nonjip)*
- 2000 Establishment of the Graduate School of Practical Music  
(expanded and renamed the Graduate School of Performing Arts in 2010)
- 2001 Founding of the Ewha Chamber Choir
- 2012 Ewha Orchestra became the first university orchestra, invited to the Seoul Arts Center Symphony Festival
- 2013 Founding of the Ewha Philharmonic Orchestra (composed of current students and alumnae)
- 2015 Founding of Korea's first all-female Korean Traditional Music Orchestra
- 2023 Founding of Korea's first Graduate School Orchestra



# 1925

EWHA  
GIVING  
THANKS



Since 1925  
EWHA THE FIRST, EWHA THE BEST  
EWHA WOMANS UNIVERSITY  
COLLEGE OF MUSIC

# 2025